



CRATE CREEK

Canyon v3a2II

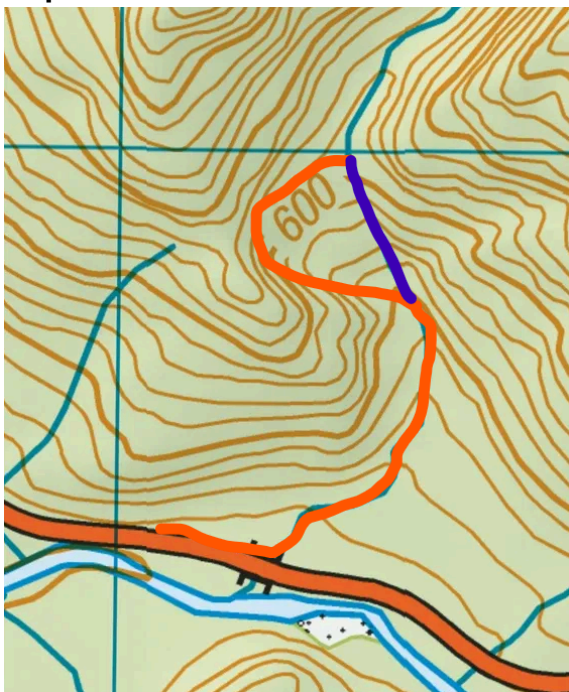
Location

Victoria Forest Park

Character

A short, steep descent through an open gorge, featuring several involved downclimbs and two pitches. It makes for a fun half-day adventure suitable for an intermediate team.

Map



Canyon in dark blue, approach/return in orange. ,

Approach by Car

Park in the layby to the west of Crate Creek.

Approach on Foot

Follow Crate Creek to the base of the canyon, elevation 500 metres. Enter the bush on the true right and climb to 600 metres via the gully before re-entering the creek. Following the creek is reasonably easygoing but the bush is quite thick in places, with lots of old logs to cross. Avoid following the ridge immediately next to the canyon edge, as this will likely result in being bluffed out.

Beware of the wasps!

Rock

Paragneiss

Water

Low flow

Catchment

8 km²

Anchors

Single Bolted Anchors

Gear

At least 1 x 40 metre rope

Route Description

Follow the river through a mostly wide and bouldery stream. There are several 2-3 metre drops that have unlikely looking downclimbs. Good route finding and judgment are required. There is a 15m and a 10m pitch halfway through the canyon.

Bolts have been intentionally placed to keep canyoneers in the watercourse, though this is unlikely to pose issues for most teams. It would be possible to take drier lines using natural anchors.

Anchor building material should be carried in case the canyon changes in floods or any of the downclimbs prove too difficult.

If you search around there are some cool grottos/caves between some of the boulders.

Time

Vehicle park to start of canyon: 1h 30 mins

Canyon descent: 2 hours

Return to vehicle: 30 mins

Total: 4h

Flash Flood Danger

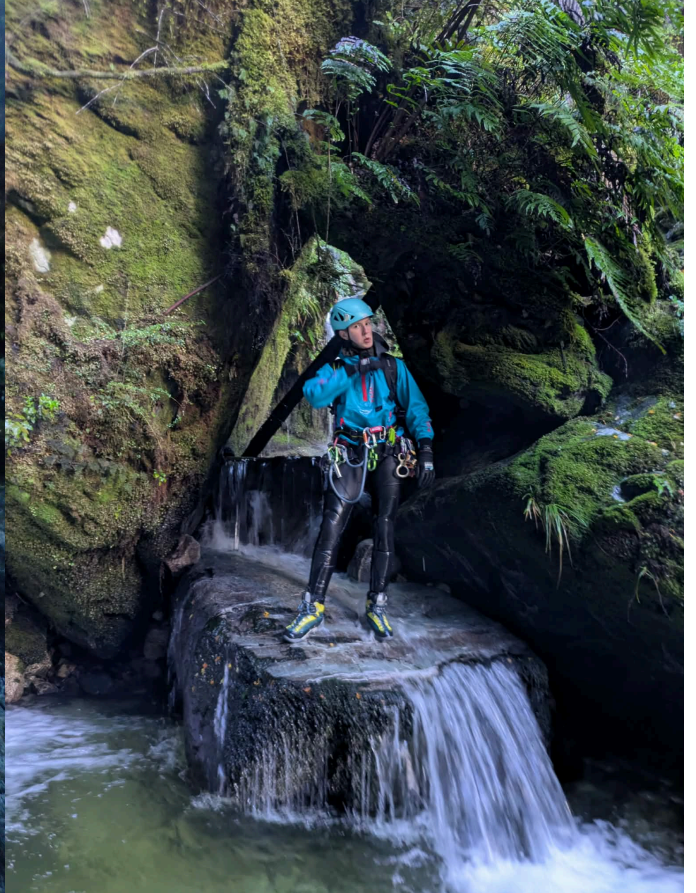
Low

Escapes

Some escapes might be possible.

Notes

First descent: Christian Miller, Amy Burney, Ben Fletcher & Jordan Wright, May 2026



CRATE CREEK
Canyon v3a2II

*Topo provided by the first
descent team*

www.kiwicanyons.org