



ONE MILE CREEK

Canyon v3a3III

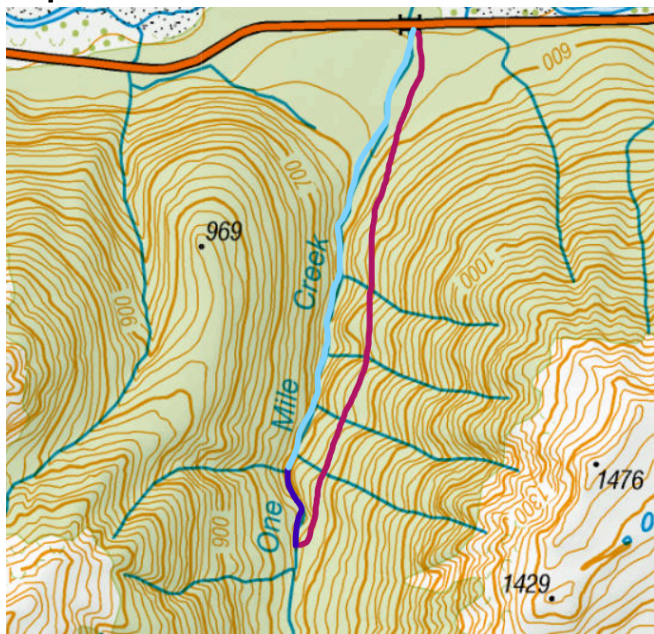
Location

Lewis Pass

Character

Short canyon through picturesque greywacke bedrock. A few cool features but over all too fast. It's a long way from the road with no obvious track, only worth doing if you have done everything else in the area.

Map



Canyon in dark blue, approach in purple, return in light blue.

Approach by Car

Park at the bottom of One Mile Creek, east of Springs Junction.

Approach on Foot

Bushbash up the true right of one mile creek. The bush intermittently changes from open to dense, with several gullies and slips to contend with. Lots of treefall in places. Climb to 800m as the forest allows, and sidle above the gorge. Once above the 17m waterfall, visible from the approach drop into the canyon at about the 740m Contour. There is no obvious track to follow, allow 2.5 - 3 hours.

Entry at NZTM 5305631.90,1542874.97

Rock

Greywacke

Water

Medium

Catchment

8.6 km²

Anchors

One single bolted anchor and one natural anchor, anchor materials should be carried.

Gear

At least 1 x 50m rope.

Route Description

Two pitches & several downclimbs through awesome greywacke bedrock. The first pitch is a 20m abseil with a single bolted anchor on the TR. The second pitch is 10m drop with an undercut TL, the FD team abseiled from a convenient log jam above this drop. Any future team would need to be prepared to replace the anchor and not rely on the log remaining in place. This drop is best protected but maybe could be downclimbed.

Once out of the canyon bolder bash 2 kms of open river back to the car.

Time

Vehicle park to start of canyon:	3h
Canyon descent	45min
Return to vehicle:	1h30min

Total

~5 hr

Flash Flood Danger

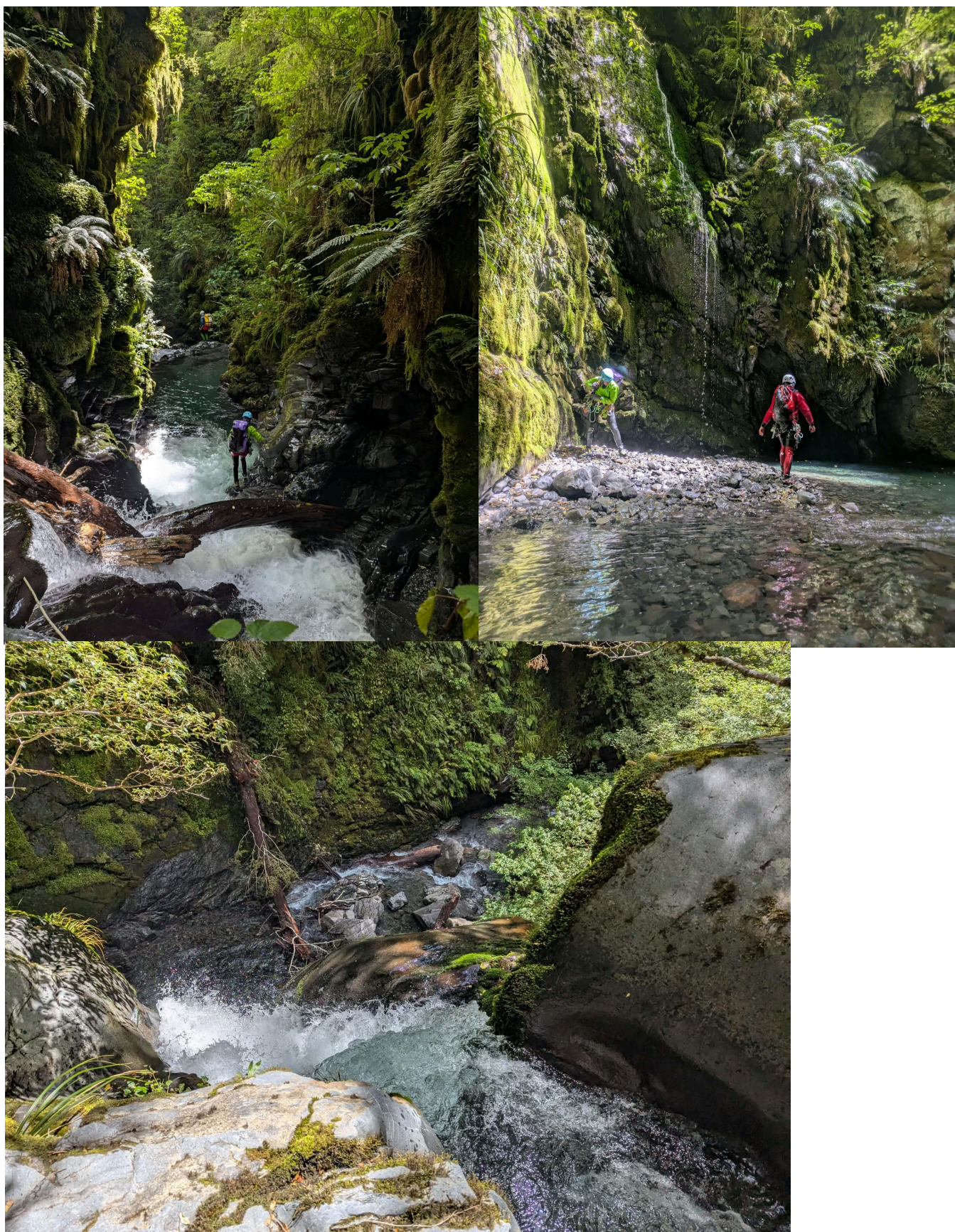
Low - the canyon is short.

Escapes

No easy escapes.

Notes

First descent: Amy Burney, Christian Miller, Conor Handley, Ben Fletcher, Feb 2026.



ONE MILE CREEK
Canyon *v3a3III*

*Topo by Ben, Christian, Amy,
Conor*

www.kiwicanyons.org

Page 2