



WATERFALL CREEK

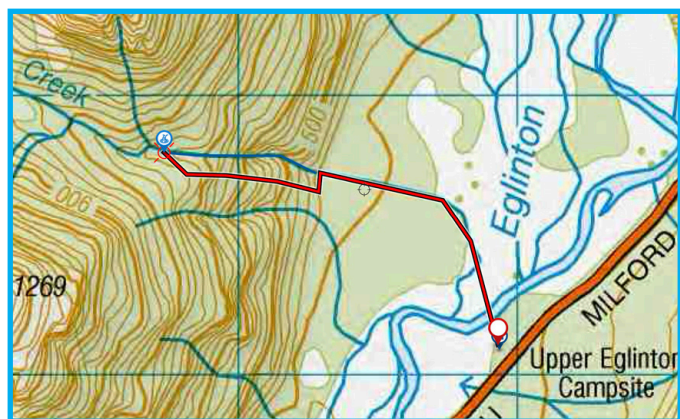
Canyon v5a3III ★★

Location

Eglinton river, Fiordland, New Zealand

Character

Relatively easy canyon for the grade. No real issues except for the big waterfall. There is an escape on the TR, right before this waterfall, if you aren't comfortable with the flow.



Map

CB-09 Hollyford

[Car park Upper Eglinton Campsite](#)

Entrance: CB09 067 137

WGS84: S 44.92007 E 168.01721

Approach by Car

Park your car at the upper Eglinton Campsite.

Approach on Foot

Cross the Eglinton river and walk upstream, Waterfall Creek, until you can see the last waterfall. Assess the flow and move into the forest and climb up on the true right of the canyon. The forest is pretty steep and some easy scrambling through the bush is involved. Traverse into the canyon around 730hm.

Rock

Beautiful granite

Water

Moderate water levels. Most of the descents are sensibly rigged and will keep you out of trouble. The big waterfall is a bit more technical, and you have to maneuver around the main flow to get down safely.

Catchment

9 km2 Note snowmelt in spring!

Anchors

Exploratory rigging!

Most descents are equipped with (single) 10 mm stainless steel 306 expansion bolts and [Tebylon](#) Hangers. Trees are rigged with 5 mm Dyneema (HMPE) or webbing and a [Tebylon half ring](#). Some 10 mm holes were drilled for temporary bolts.

Gear

At least 2x 90m, Plus a shorter rope for a handline. (Re) Bolting kit. (anchors can always get damaged in floods)

Route Description

Some short and easy descents in beautiful rock will bring you to the big drop. A handline to the main anchors can be rigged using a bolt on the TL. The first 35 m of the descent, which you can see from the top, are close to the flow and you will need to perform some acrobatics to avoid the force of the flow. The lower section is abseiled on the true left and will keep you away from the flow. watch out for loose rocks

Time

Vehicle park to start of canyon	2 hr
Canyon descent	3 hr
Return to vehicle	30 min
Total	5 h 30 min

WATERFALL CREEK

Canyon v5a3III ★★

Topo by E. Birkhoff
www.kiwicanyons.org

Flash Flood Danger

The 85m waterfall will probably become challenging in higher water flows than experienced during the first descent.

Escapes

One escape exists just before the big waterfall. No other escapes identified, but there might be possibilities.

Notes

First descent: 28-3-2025

[Dutch Canyoning Expedition](#) - Erik Birkhoff, Erwan Coq, Pepijn Hoeksema, Bas Hetterscheid, Britt Joosten, Jaap Sikkema, Bram de Vries,

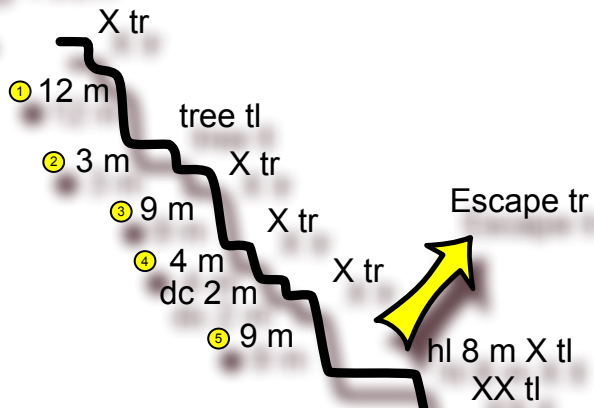
Waterfall Creek has a very good effort to fun ratio! A nice descent with a very beautiful big waterfall which you can see from the Te Anau - Milford highway.





R6 85meter Rappel

Entrance @ 730m



7

⑥ 85 m

hl 7 m X tl
tree tr

⑦ 35 m

150 m walk & downclimb

hl 4 m X centre
XX centre

⑧ 25 m

Exit



WATERFALL CREEK

Canyon v5a3III ★★

Topo by E. Birkhoff
www.kiwicanyons.org



CANYONZONE.COM
EXPERTS IN CANYONING & CAVING



Last Rappel R8





EXPEDITION NZ 2025



GUARA

NZ1 CANYONING
ASSOCIATION

CANYONZONE.COM
EXPERTS IN CANYONING & CAVING

AS
ASPIRING

CE4

 **CANYONING**
SCHOOL

 **CANYONING**
New Zealand


TEBYLON

ROPE ACCESS NOORD

radix


CANYONING
EXPEDITION TEAM

DRAGONS' DEN