



PĪWAKAWAKA FALLS

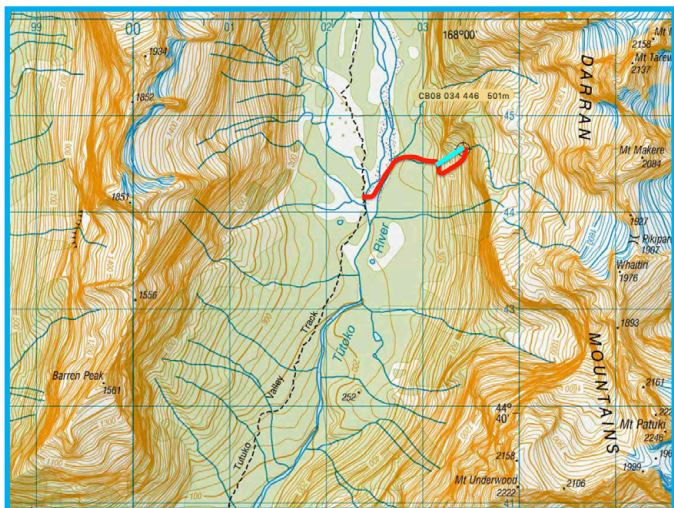
Canyon v3a2II ★★

Location

Tūtoko river, Fiordland, New Zealand

Character

A succession of abseils and beautiful pools. Aesthetically very pleasing canyon. Don't forget your camera!



Map: CB08 - Homer Saddle.

Car park: [Tūtoko valley river hike](#)

Start of the canyon: CB08 034 446

WGS84: S 44.64192 E 167.99883

Approach by Car

Take the Milford Sound Highway (94) and park your car just after the bridge over the Tutoko river, where the [Tūtoko valley river hike](#) starts.

Approach on Foot

Follow the Tutoko valley river track for approximately 2h until you can clearly see the canyon on the right. Cross the Tutoko river (CB08 024 446) and follow the canyon upstream until underneath the last waterfall. Here you check the flow. Climb up on the true left of the canyon. The going is steep but easy and you will gain height very fast. When you're around the 480 m contour line you traverse towards the canyon to end up just under the obvious

big cliff face around 500m contour.

The upper part above the existing canyon might hide a V5 (or V6?) section for whoever finds a way to approach it.

Rock

Compact granite

Water

Moderate flow during low water conditions. There is one "swirly" pool with a siphon in the r5. It is no problem in low water conditions (you can traverse it using a hidden ledge on the left) but be careful in high water!

Catchment

2 km² & Glacier fed

Anchors

Exploratory rigging!

Most descents are equipped with (single) 10 mm stainless steel 306 expansion bolts and [Tebylon](#) Hangers. Trees are rigged with 5 mm Dyneema (HMPE) or webbing and a [Tebylon half ring](#). Some 10 mm holes were drilled for temporary bolts. Some anchors are in exposed locations and might require a body belay to reach them safely.

Gear

At least 2 x 50m ropes. (Re)bolting kit.

Route Description

The descent is pretty straightforward. Most of the time you can see two or three waterfalls ahead of you! Some anchors might be a bit difficult to find and/or to approach, as the descents are very continuous and the anchors will often be right on the edge of the pool. A body belay can be useful to safely access some anchors.

PĪWAKAWAKA FALLS

Canyon v3a2II ★★

Time

Vehicle park to start of canyon	3hr
Canyon descent	2h30min
Return to vehicle	2h
Total	7h30min

Flash Flood Danger

Flooding characteristics are unknown. Assess the flow before you commit to a descent.

Escapes

The canyon is very open and you can probably traverse out of the canyon in a few places. None of the escapes have been tested.

Notes

First Decent : 01-04-2025

[Dutch Canyoning Expedition](#) - Erik Birkhoff, Erwan Coq, Bas Hetterscheid, Oscar Burford, Pepijn Hoeksema, Britt Joosten, Bram de Vries

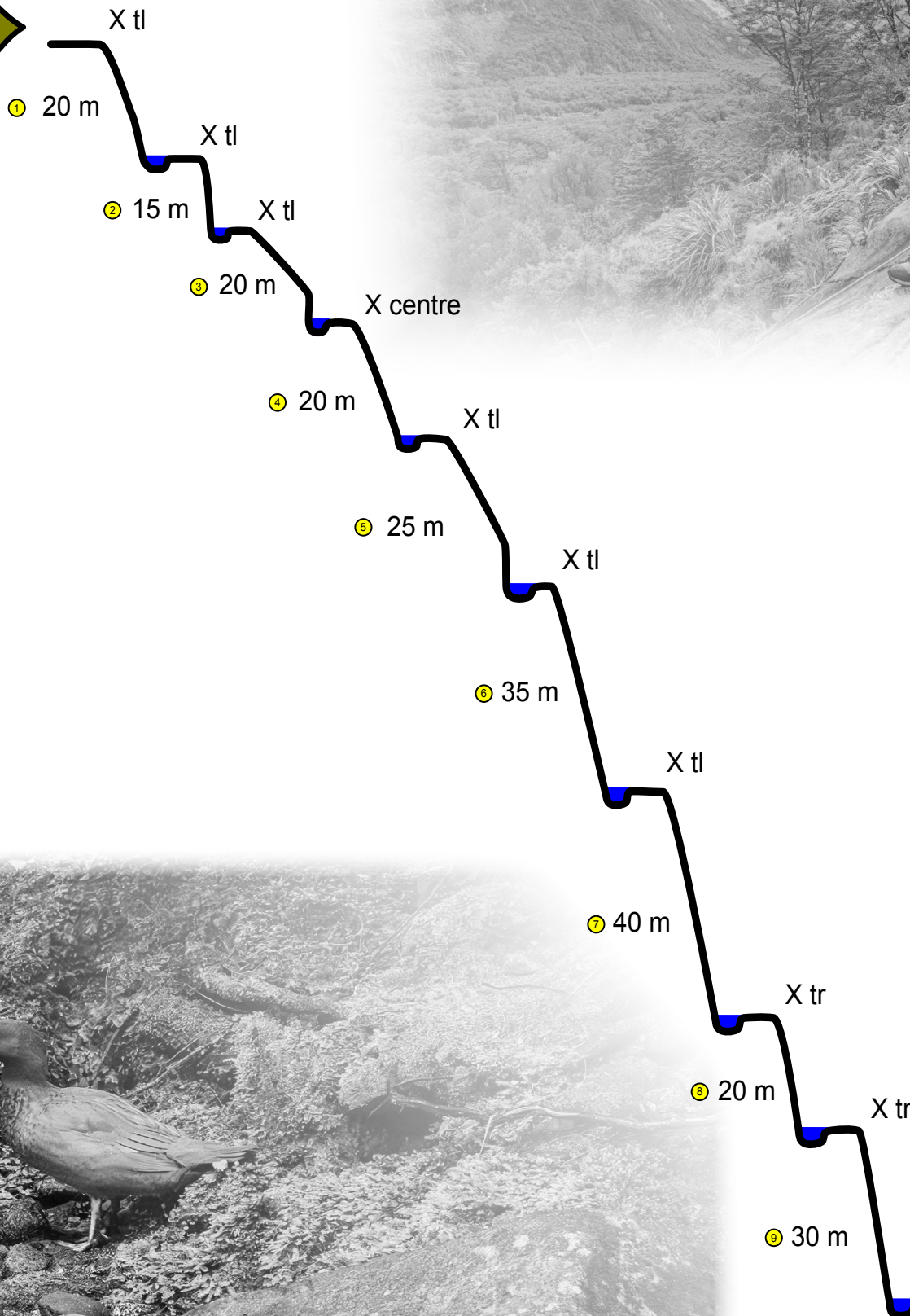
Excellent canyon in a very wild valley close to Milford Sound. A vertical succession of beautifully sculpted pools with magnificent views across the valley which will leave you speechless! Definitely worth the effort of the walk in.

Some hidden slides exist to add some spice to what is otherwise a straightforward descent.





Entrance @ 500m



PĪWAKAWAKA FALLS

Canyon v3a2II ★★

Topo by E. Birkhoff
www.kiwicanyons.org



R9, Final Rappel







EXPEDITION NZ 2025



GUARA

NZ1 CANYONING
ASSOCIATION

CANYONZONE.COM
EXPERTS IN CANYONING & CAVING

AS
ASPIRING



CANYONING
New Zealand

TEBYLON

ROPE ACCESS NOORD

radix

CANYONING
EXPEDITION TEAM

DRAGONS' DEN