



EASY CREEK

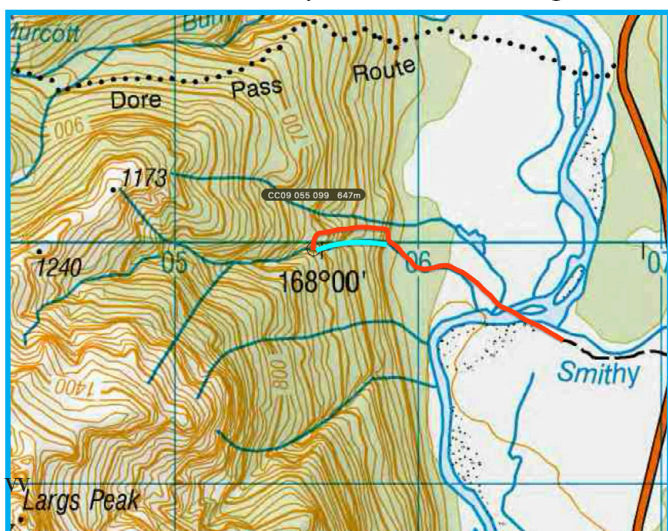
Canyon v3a1III ★

Location

Eglinton river, Fiordland, New Zealand

Character

A nice little descent without any real difficulties. The big waterfall can almost totally be seen from the top anchors.



Map

CC09 - North Mavora Lake.

[Car park: CC09 066 095](#)

Start of the canyon: CC09 055 099

WGS84: S 44.95418 E 167.99978

Approach by Car

Take the Highway from Te Anau to Milford. Just after the Kiosk Creek Campsite you take a grassy road on the left just before the bridge over Smithy Creek. Follow the road for approximately 300 m and park here. You need a car with high clearance for the grassy road. Alternatively you can park next to the big road.

Approach on Foot

Cross the Eglinton river and follow Easy Creek upstream until you can see the last waterfall. You ascent on the true left of the canyon. You have to scramble/climb around a

couple of small cliffs on the way up. Abseil into the canyon from a tree around the 630m contour.

Rock

Granite, average quality

Water

Not much flow during normal conditions. It is possible to check the flow at the last waterfall before you commit to the descent.

Catchment

2 km²

Anchors

Exploratory rigging!

Most descents are equipped with (single) 10 mm stainless steel 306 expansion bolts and [Tebylon](#) Hangers. Trees are rigged with 5 mm Dyneema (HMPE) or webbing and a [Tebylon half ring](#). Some 10 mm holes were drilled for temporary bolts.

Gear

2 x 85m + a shorter rope for handlines. (Re)bolting kit.

Route Description

After a ten meter abseil you arrive at the head of the big waterfall. A bolt is available for a handline high up on the true left. There are two anchors for the main descent. A beautiful 70 m descent in a clean washed tube. 5 more abseils will bring you back to the valley floor.

Time

Vehicle park to start of canyon	1hr30min
Canyon descent	2hr
Return to vehicle	20min
Total	3h50min

Flash Flood Danger

Low flow during the first descent. The river bed shows signs of serious flooding so only do this descent in stable weather.

EASY CREEK

Canyon v3a1III ★

Escapes

Some options for escape might exist. None were tested.

Notes

First Decent : 31-03-2025

[Dutch Canyoning Expedition](#) - Erik Birkhoff, Erwan Coq, Pepijn Hoeksema, Bas Hetterscheid, Britt Joosten, Bram de Vries,

Excellent canyon for the novice canyoneer who wants to do a big waterfall!



Entranc @ 630m



tree tl

① 20 m

X centre

② 10 m

hl 8 m X tl
XX tl

③ 70 m

X tr

④ 10 m

tree tl

⑤ 6 m

X tr

⑥ 12 m

X tl

⑦ 15 m

X tl

⑧ 20 m

Exit



EASY CREEK

Canyon v3a1III ★

Topo by E. Birkhoff
www.kiwicanyons.org





CANYONING
EXPEDITION TEAM



CANYONING
EXPEDITION TEAM







EXPEDITION NZ 2025



GUARA

NZ1 CANYONING
ASSOCIATION

CANYONZONE.COM
EXPERTS IN CANYONING & CAVING

AS
ASPIRING

CE4

 **CANYONING**
SCHOOL

 **CANYONING**
New Zealand


TEBYLON

ROPE ACCESS NOORD

radix


CANYONING
EXPEDITION TEAM

DRAGONS' DEN