



WHIO CREEK

canyon v4a4III ★★★

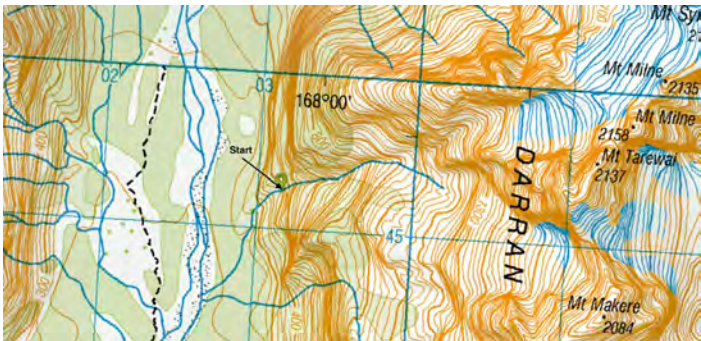
Location

Milford

Character

Whio Creek is a short but super fun canyon in the enchanting Tutoko valley. Only the bottom section has been done, there is plenty of canyon left to explore above the big waterfall.

Map



Route Description

Mostly jumps and slides. Bolts have been placed so you can check the landings of all but the last 2 drops which you can scramble in and out of. Not ideal for a big group. Bolts could easily be washed out. You can have a few goes at the first drop and the last couple if you want, or if there is time, do the canyon twice!

Time

Vehicle park to start of canyon	2hr30min
Canyon descent	2hr30min
Return to vehicle	2hr15min
Total	7h15min

Escapes

After the 1st drop there are no easy escapes until the second to last drop.

Notes

First descent: Will Hamilton, Bailey Taylor, 28 Dec 2023

Approach by Car

Park at the Tutoko Bridge

Approach on Foot

Walk up the Tutoko valley track and cross the river when you get to the valley flats (about 2hrs) walk up Whio creek (one creek south of leader creek) for 15 minutes until you're at the bottom of the canyon. Now scramble up the mossy slabs on the true right to the base of the big waterfall. Topo start point -44.636414, 167.996407

As you walk up you can see most of the drops and check the bolts are still there.

Rock

Solid Granite

Water

Low to normal flows. There are no ledges so you must stand in shallow water in the main flow to get to the bolts.

Anchors

Single bolts with maillon for everything you need to rap. Just a hanger on the jumps and slides.

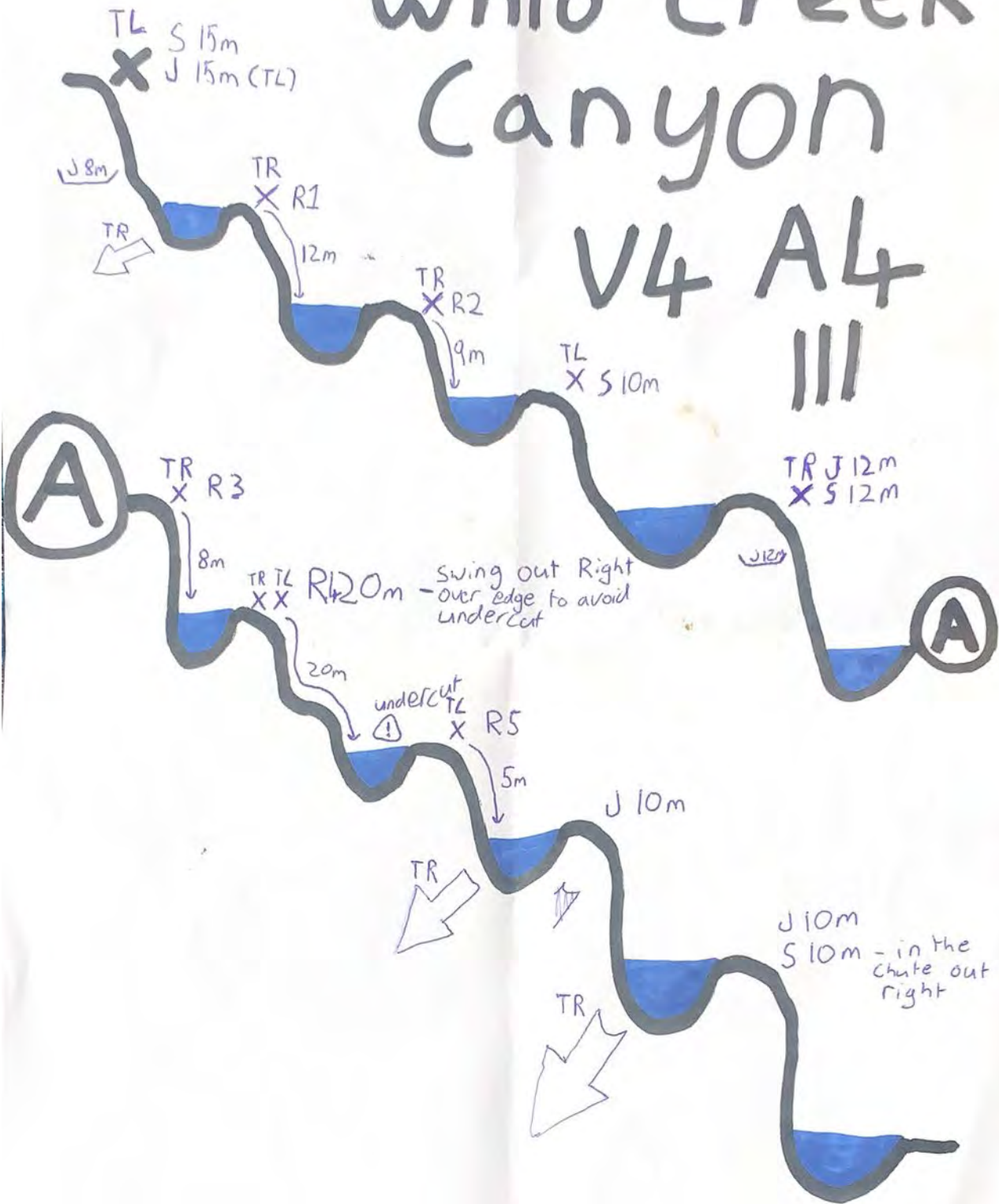
Gear

Could be worth bringing a few maillons in case you need to abseil the jumps and slides.



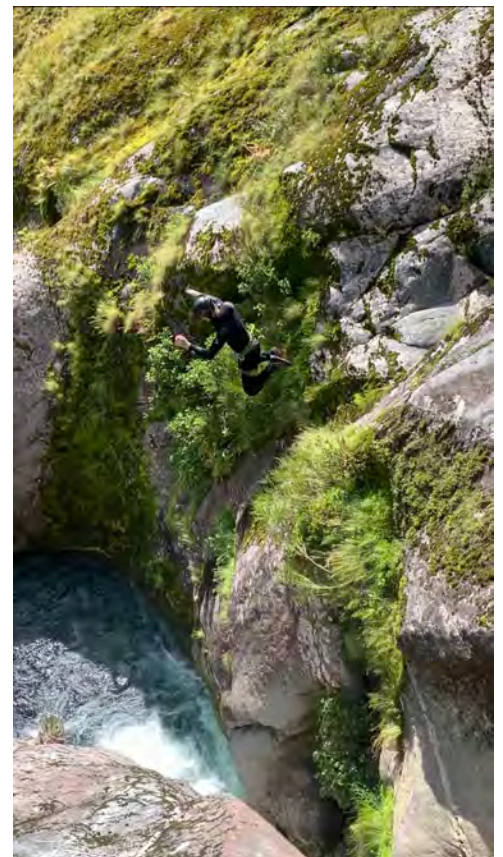
Whio Creek Canyon

V4 A4 III



WHIO CREEK

Canyon v4a4III☆☆☆



WHIO CREEK

Canyon v4a4III☆☆☆