



SLOTATOTE

canyon v4a5V★

Location

National Park

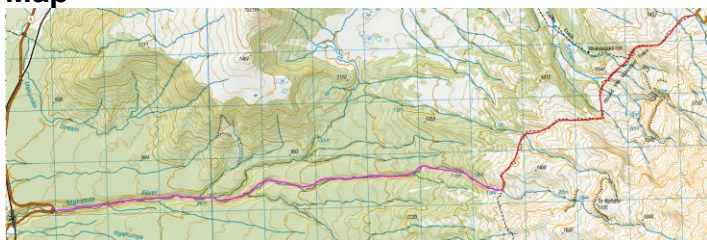
Character

This trip is an epic.

This is a 7km slot with a few breaks in it. Once you commit to the slot, you commit to a long day.

The canyon has most of its elevation change and raps at the start. Once you get into the slot, it's mostly walking/floating down the riverbed, and there aren't any raps until the marked 26m waterfall.

Map



Red: walk in

Pink: canyon

Start of canyon: -39.261367, 175.49861

Approach by Car

Park a car off the road, by the bridge at the takeout. Then drive over the Whakapapa and go to the carpark for the Round the Mountain track.

Approach on Foot

Follow the Round the Mountain track.

Water

Cold and a large catchment. It starts off as a small river but ends up with substantial flow.

Catchment

Massive

Anchors

Mix of natural anchors and single bolts. From memory, we left anchors at every rap, but we didn't record anything.

The next trip should take bolting equipment and webbing as there have been large floods. Treat the next descent like it's the first.

Gear

Largest rap ~40m

2 x 50m ropes

Route Description

Most of the abseiling is at the start of the canyon before the slot. Eventually, you come out of a small gorge at an unmarked 30m drop. From the bottom of that rappel, you're committed with little escape.

Once you enter the Makatote Slot, there are no raps until the last marked waterfall. This is also the last rap.

The last marked waterfall ends in a pool where the water will push you into a boulder with an undercut. Make sure the rope length is rigged appropriately and lie on your back/push off the undercut.

After the last waterfall, you swim down a slot gorge all the way to the bridge. Be aware of whitewater features like strainers, sieves, siphons and entrapments.

Take out: After you reach the bridge, walk downstream another 100/200m and you'll reach some pillars from an old bridge. Go into the bush on TR and there's a break in the cliff line to climb up.

Time

Car to car ~14hrs

Dangers

The river has a lot of water going down it and there is a significant undercut at the last rap. Treat the flow with caution. Be aware of whitewater features like strainers, sieves, siphons and entrapments.

Escapes

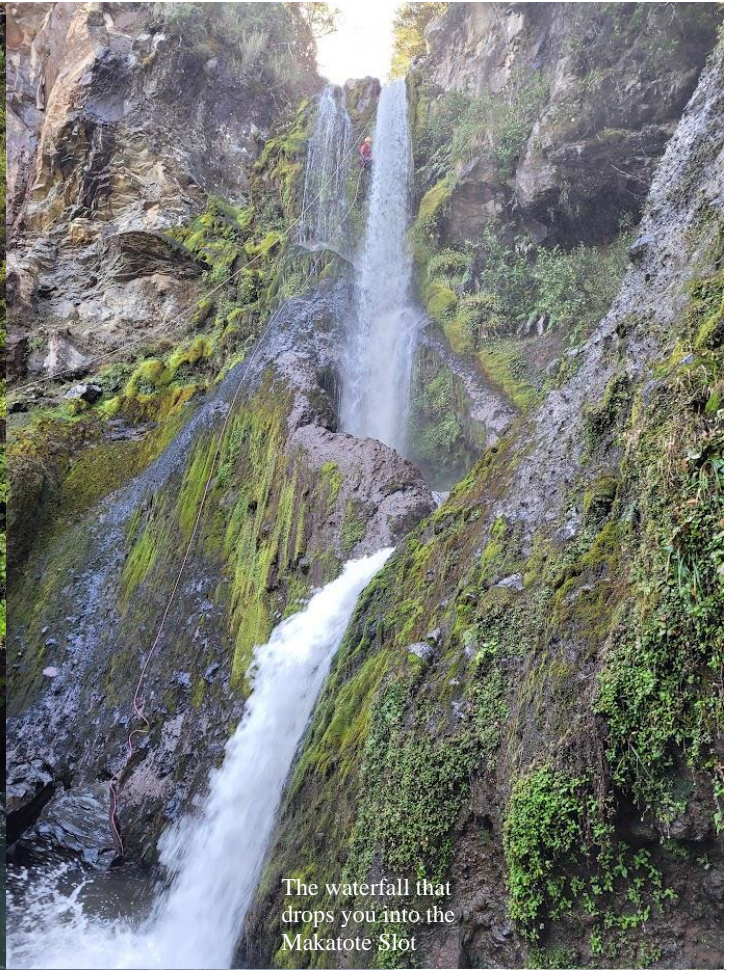
Once you do the ~40m rappel (unmarked), there are very few escapes until the large convergence from TR. Then after the last waterfall, there's no escape until the take out.

Notes

First descent: James Judd, Luke Carpenter and Sacha Knight in April 2023



One of the waterfalls close to the start



The waterfall that drops you into the Makatote Slot



The Makatote Slot



The last waterfall

SLOTATOTE

Canyon v4a5V ★

Topo by James Judd, Luke Carpenter and Sacha Knight
www.kiwicanyons.org