



# MAKAHIKATOA

*canyon v1a3II*

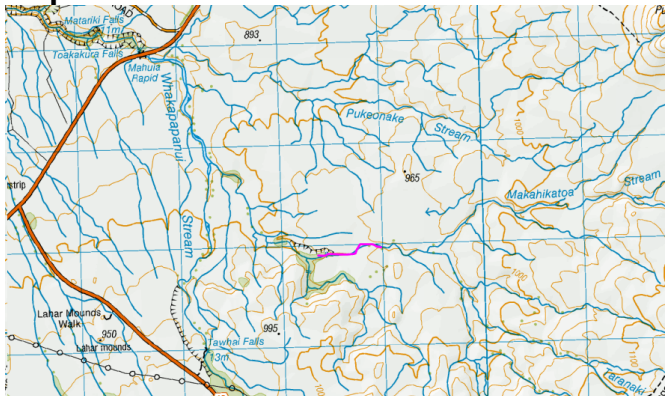
## Location

National Park

## Character

This canyon is not worth it. Hard bush bash to access the canyon. Beautiful once you're there, but quite short and then a long river bash to get out. Zero stars

## Map



Pink: canyon

Start of canyon: -39.163675, 175.533972

## Approach on Foot

Goodluck. We tried bush bashing straight to it from Tawhai, but that took hours.

## Catchment

Massive

## Anchors

We left some webbing in the bush on TR at the top of the gorge above the last drop. It will have suffered UV damage.

## Route Description

The drop at the end all goes into a siphon and disappears, it's quite neat. Everything else we meat anchored, jumped and downclimbed. After that drop, it's a long river bash out.

## Time

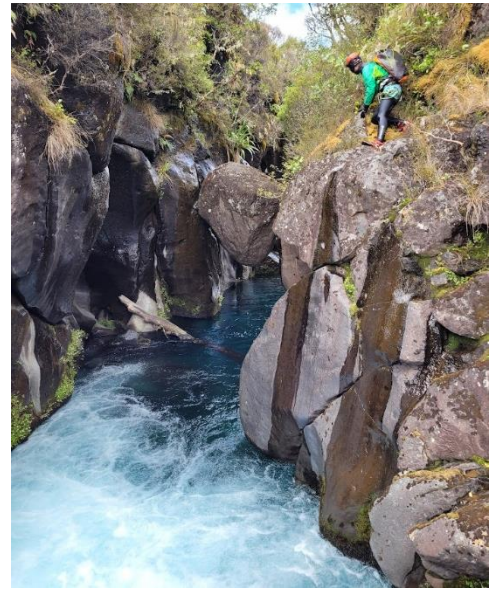
The good part of a day.

## Escapes

You can escape everywhere.

## Notes

First descent: James Judd and Luke Carpenter in December 2022



# **MAKAHIKATOA**

---

*Canyon v2a3II*

*Topo by James Judd and  
Luke Carpenter  
www.kiwicanyons.org  
Page 2*