



HUCKATOTE

canyon v4a5III

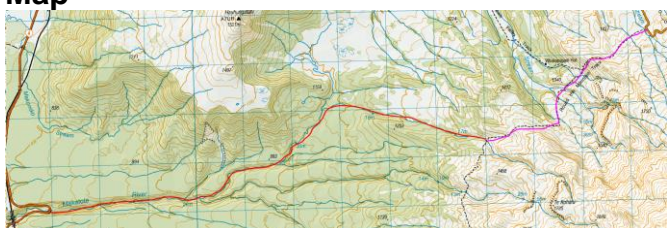
Location

National Park

Character

Long and slippery with a few big waterfalls. As you go downstream, multiple rivers converge to create a substantial flow. Zero stars, some cool waterfalls but wouldn't go back given the effort. The waterfalls marked on topomaps are the only raps.

Map



Pink – walk in

Red – canyon

Start of canyon: -39.251863, 175.503502

Approach by Car

Park a car off the road, by the bridge at the takeout. Then drive over the Whakapapa and go to the carpark for the Round the Mountain track.

Approach on Foot

Follow the Round the Mountain track.

Water

Cold and a large catchment. It starts off as a small river but ends up with substantial flow.

Catchment

Massive

Anchors

All natural anchors at the marked waterfalls.

Gear

2 x 40m ropes

Largest rap ~30m

Route Description

Start walking. Keep walking. Slip over lots.

The last marked waterfall ends in a pool where the water will push you into a boulder with an undercut. Make sure the rope length is rigged appropriately and lie on your back/push off the undercut.

After the last waterfall, you're in the Makatote slot. Swim down the gorge all the way to the bridge. Be aware of whitewater features like strainers, sieves, siphons and entrapments.

Take out – after you reach the bridge, walk downstream another 100/200m and you'll reach some pillars from an old bridge. Go into the bush on TR and there's a break in the cliff line to climb up.

Time

Full day

Dangers

The river has a lot of water going down it and there are some significant undercuts. Be comfortable dealing with these before attempting this river.

Escapes

The river is very open until the last waterfall, from there on it's a gorge to the car.

Notes

First descent: James Judd, Luke Carpenter and Jacob Molé November 2023

Rumour has it, some kayakers might be huck this in flood.



HUCKATOTE
Canyon v4a5III

*Topo by James Judd, Luke
Carpenter and Jacob Molé*
www.kiwicanyons.org