



TE PUNGA NGARO CANYON

V4a2IV ★

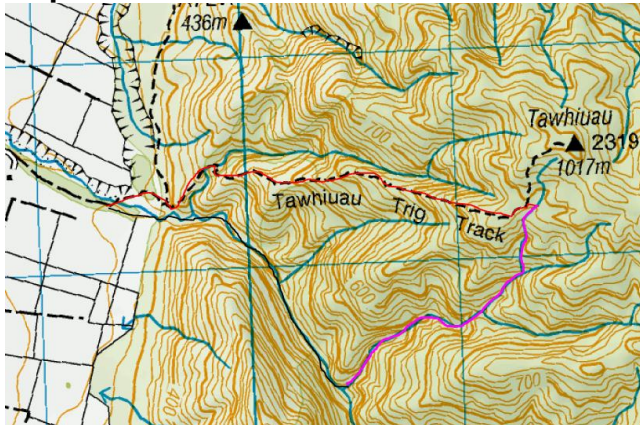
Location

Murupara

Character

Te Punga Ngaro “The Lost Anchor” is an intermediate level canyon with consistent abseils and a slowly building flow as you descend. There’s no swimming, making this a great winter option and some spectacular drops at the end.

Map



Red is the walk in
Pink is the canyon
Black is the walk out

Carpark: -38.460579, 176.773496

Start of Canyon: -38.460814, 176.7974

Approach by Car

On Troutbeck Rd, there’s a gravel road that starts by the bridge. Drive to the end of the gravel road.

Approach on Foot

Follow the track across the river and then straight up the ridge to Tawhiuau. It’s steep!

Water

Low flow at the start but a medium flow at the end which can become spicy in flood.

1km² catchment.

Anchors

All natural anchors except for a few bolts marked on the topo. The double bolts are independent, i.e. not linked by chain, so be aware of how to rig those.

Gear

2 x 50m ropes minimum

Route Description

The river starts off as a trickle with a series of drops. When you hit the second tributary at R12, the flow doubles just in time for the main features.

At the bottom of R13 there is a bolt in the wall at the back of the pool for R14 to access the double bolts of R15 which are dangling over the ledge of the drop.

There is some ongaonga (stinging nettle) as you get into the lower sections of the canyon, so keep an eye out for that.

On the walk out, there is a track that zig zags along the river.

Time

Vehicle park to start of canyon	2hrs
Canyon descent	6hrs
Return to Vehicle	1hr
Total	9hrs

Hazards/Escapes

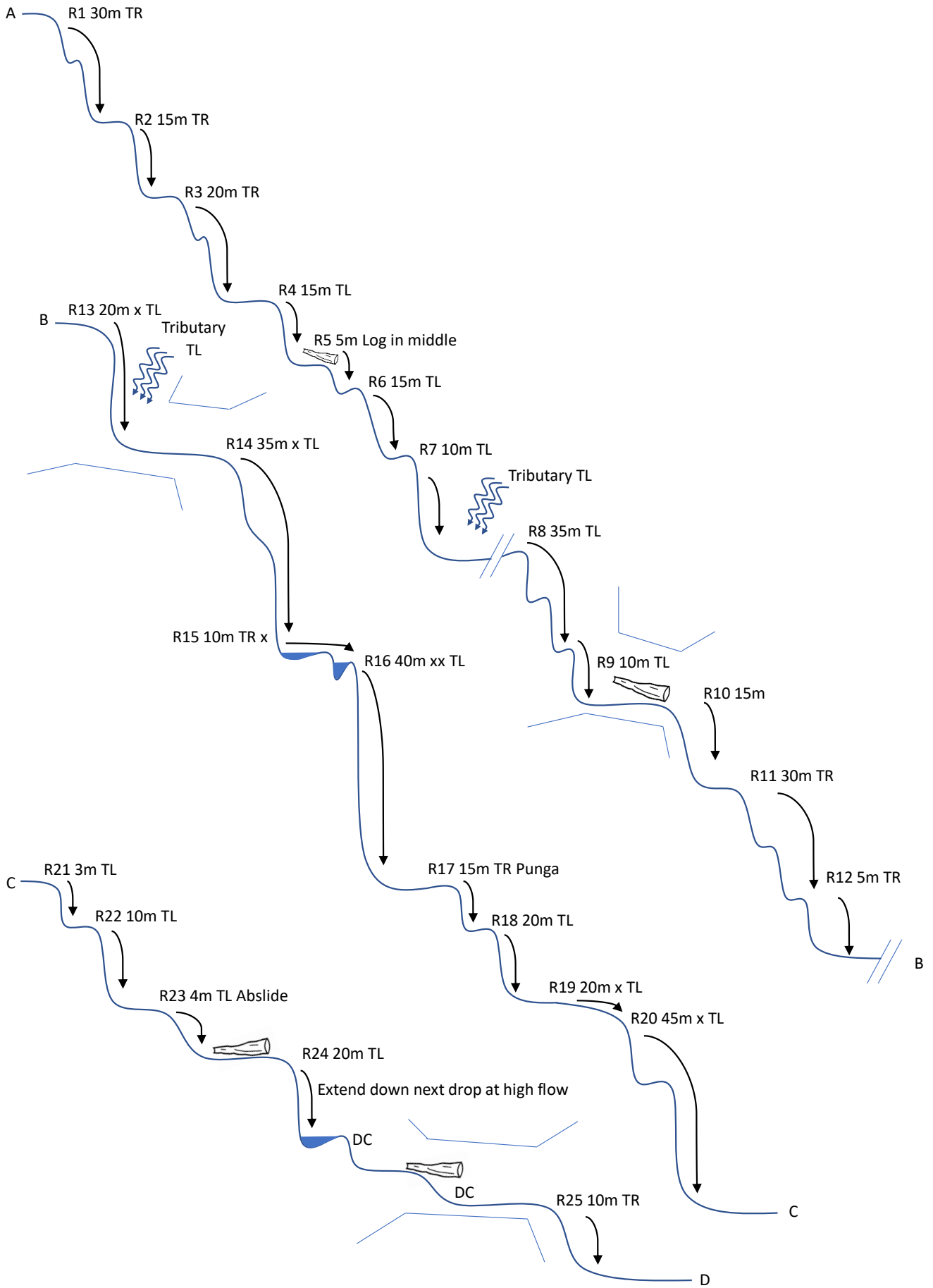
This canyon is difficult to get out of at times, there are steep walls and limited anchor options.

Notes

First descent: Kieran Chandler and Ryan Malcolm

Te Punga Ngaro directly translates to “The Lost Anchor”, but it’s also a metaphorical expression used to describe a stabilizing force that has been lost. The second descent of this canyon was more than 5 years after the first descent, at which point some bolts were hidden with thick moss and dirt. The one below was re-discovered after someone slipped on the moss, revealing it at R15. Look closely for the mullion!





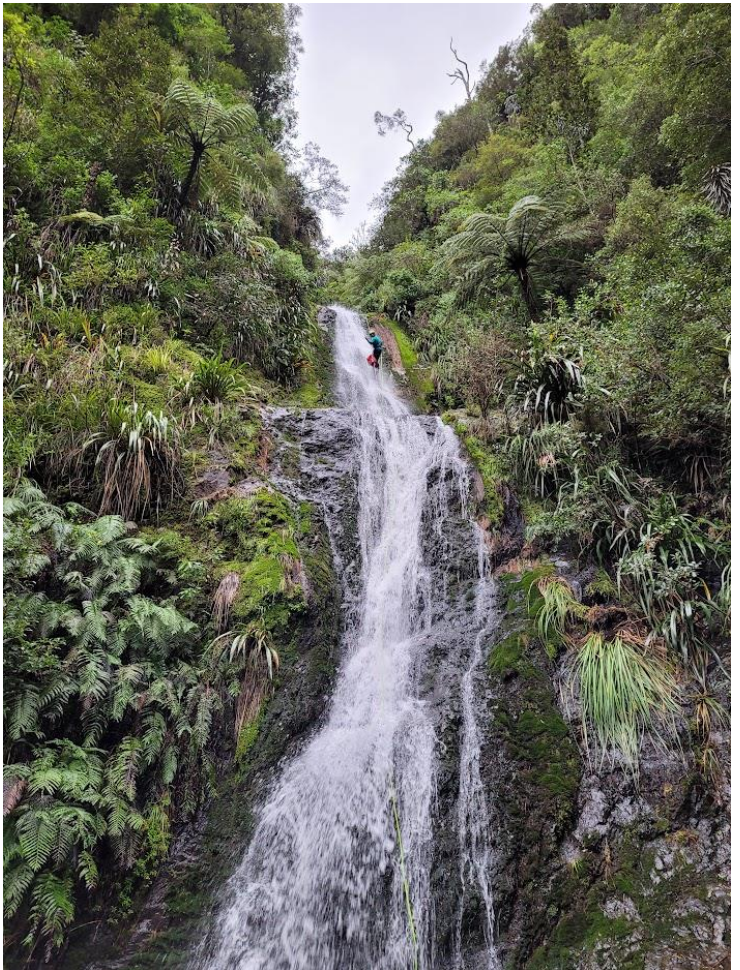
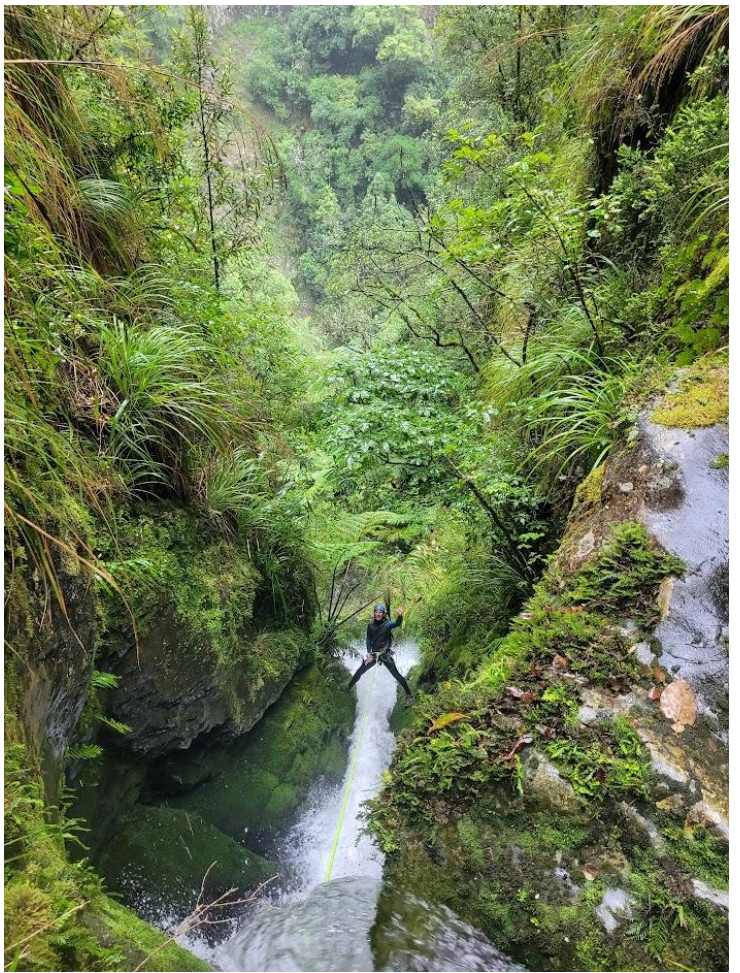
TE PUNGA NGARO CANYON

V4a2IV ★

Topo by James Judd

www.kiwicanyons.org

Page 2



Top Left: Scott Hewetson on R12
Top Right: Scott Hewetson on R13
Bottom Left: Jacob Mole locking off on R15
Bottom right: Jacob Mole locking off on R19

TE PUNGA NGARO CANYON

V4a2IV ★

Topo by James Judd

www.kiwicanyons.org

Page 3