



DIEDRICHS

Creek v4a4IV ★★ ★

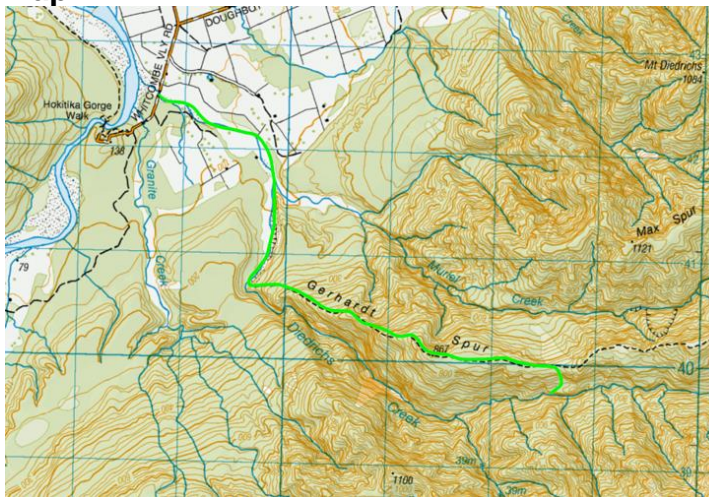
Location

Tributary to the Hokitika river on river right, just before the Hokitika Gorge.

Character

Honest uphill walk in, minor downhill bush bash. 600 meters descent over 4 km. Tons of scrambling, jumping and problem solving. Only 5 abseils. Bedrock and boulders, but never feeling too boxed in.

Map



Approach by Car.

Drive towards Hokitika gorge, just past Precision Helicopters hanger the road goes over Diedrichs creek. Park here. Heli drop off is a likely option and relatively cheap given the location of the base. Precision Helicopters. 0800 246 359

Approach on Foot

Access is pretty smooth given how much terrain is on offer, but it is a big day out, so start early!

Walk up Diedrichs creek to the well-formed cairn that marks the start of the Gerhardt Spur track.

Climb steeply up to the .876 and continue along a relatively flat ridge for a further 1.3km. Just before the track climbs steeply again, bushbash south. The bush here is pretty tight, but don't be put off, it doesn't last too long! After descending 100m from the track, follow a small stream which heads west towards the canyon. The travel is easier on the stream's true left spur. 1 Absiel is required to get into Diedrichs Canyon.

Rock

Solid and clean bedrock schist. With numerous boulders.

Water

Low flows likely to make some abseils and scrambles easier. Often abseiling in and across main flows. Very wet canyon.

Catchment

Alpine, snow melt till early summer.

Anchors

3 bolted anchors, one trees, one bollard.

Gear

1 x 60 m rope. Simple anchor building gear.

Route Description

Diedrichs bounces in and out of bedrock slots with frequent 10-15 m obstacles that have unlikely looking scrambles or jumps. This character remains the same for its entire length.

The most committing drop (about halfway down) involves a careful belayed 'inflow' scramble to a blind lip with a one foot launch pad on the right. This is a 10 M jump into a deep pool. It is significantly more manageable than it looks. (See image)

Time

Vehicle park to start of canyon	3hr
Canyon descent	5-6 h
Return to vehicle	30min
Total	9h

Flash Flood Danger

Only go on a good forecast with predicted low flows.

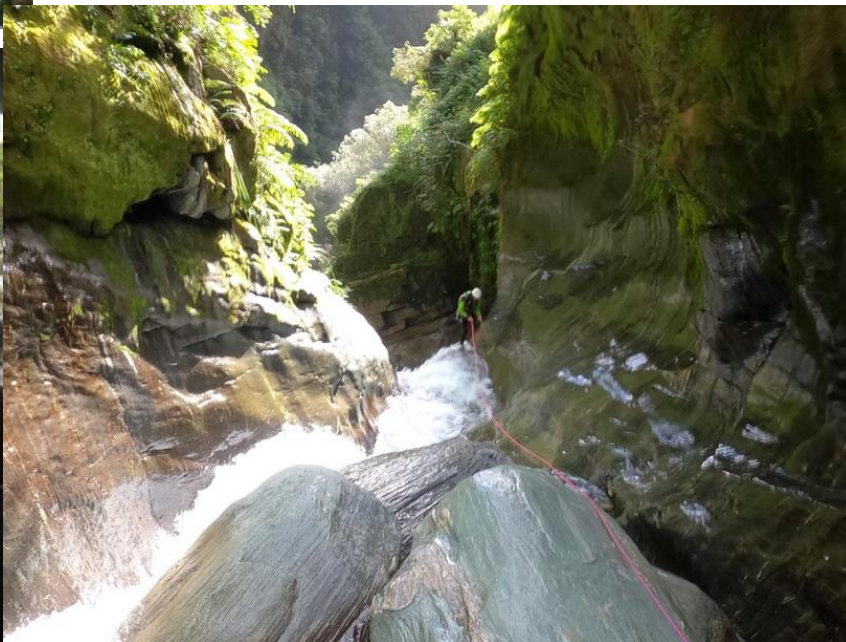
Escapes

Bush bash straight up hill on river right to Gerhardt Spur.

First descent

On the back of the Muriel Descent 3 years earlier, Diedrichs had been looked at as Muriel's twin sister. Access, location and character appeared similar, just turn right rather than left on the approach.

Probing in from the bottom came to a dead end pretty quickly (which was a good sign). Easter Friday, 2022, Keith Riley, Big Al and Greg Lee dropped in to discover Diedrichs was the much more attractive and playful sister to Muriel.



The most committing drop.



DIEDRICHS

Creek v4a4IV ★★☆☆

Topo by Keith Riley
www.kiwicanyons.org