



GAMBLER'S CANYON

canyon v4a1IV ★

Location

Takaka

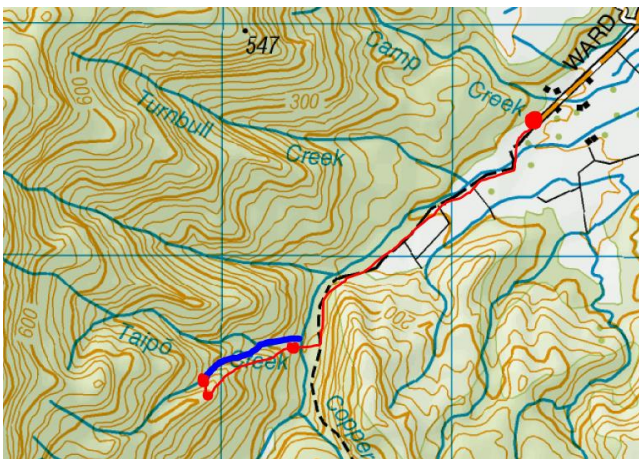
Character

Only a first descent of this canyon has been done and it was without bolting equipment. **The second descent should be made with bolting equipment** as natural pro efforts will be washed out/have you abseiling through bush.

It is a very low water slot that turns into a steep drop which requires a few re-belays. Whilst the waterflow is low, the slot at the start and vertical aspect of the finish make the canyon exciting. The first descent was done without wetsuits in mid-summer on a hot day, just in thermals and raincoats.

Map

BN24 Collingwood



Start of spur: -40.816083, 172.707567

Top of spur: -40.818129, 172.702804

Start of canyon: -40.817642, 172.702546

Approach by Car

Drive to the Parapara Peak track carpark at the end of Ward-Holmes Rd, Takaka-Collingwood highway.

Approach on Foot

Follow the Parapara peak track to the bottom of the Taipo stream. Right on the corner where the Taipo stream converges with the main river, bush bash up the ridge. There are lots of rabbit tracks that can be followed to the top. You will also need to learn to appreciate the importance of gorse for biodiversity and ecosystems so

that you enjoy its presence along the ridge rather than losing your sanity.

Rock

Schist

Water

Very low water – we did it without wetsuits in mid summer.

Catchment

~0.25km²

Anchors

Currently all natural anchors, **bolting is needed**. First descent was done without bolting gear so some of the anchors are likely to be washed out and are set off to the side of waterfalls, through the bush.

Gear

First descent was done with 2 x 60m. The final 3 rappels on the topo made them necessary. This will change with bolting as it could be made into a canyon for 1 x 60m rope.

Route Description

The river starts off as a small dribble and then you abseil into a slot. As the slot eventually opens, you come to a ~150m vertical horizon line which is pretty much one waterfall with a few ledges. The bottom of the 150m ends up joining the bottom of the 30m waterfall on the Taipo canyon. Follow the Taipo topo from there (a couple of bolted 4m drops).

Time

Vehicle park to start of canyon	1h30min
Canyon descent	1h30min
Return to vehicle	30min
Total	3.5h

Flash Flood Danger

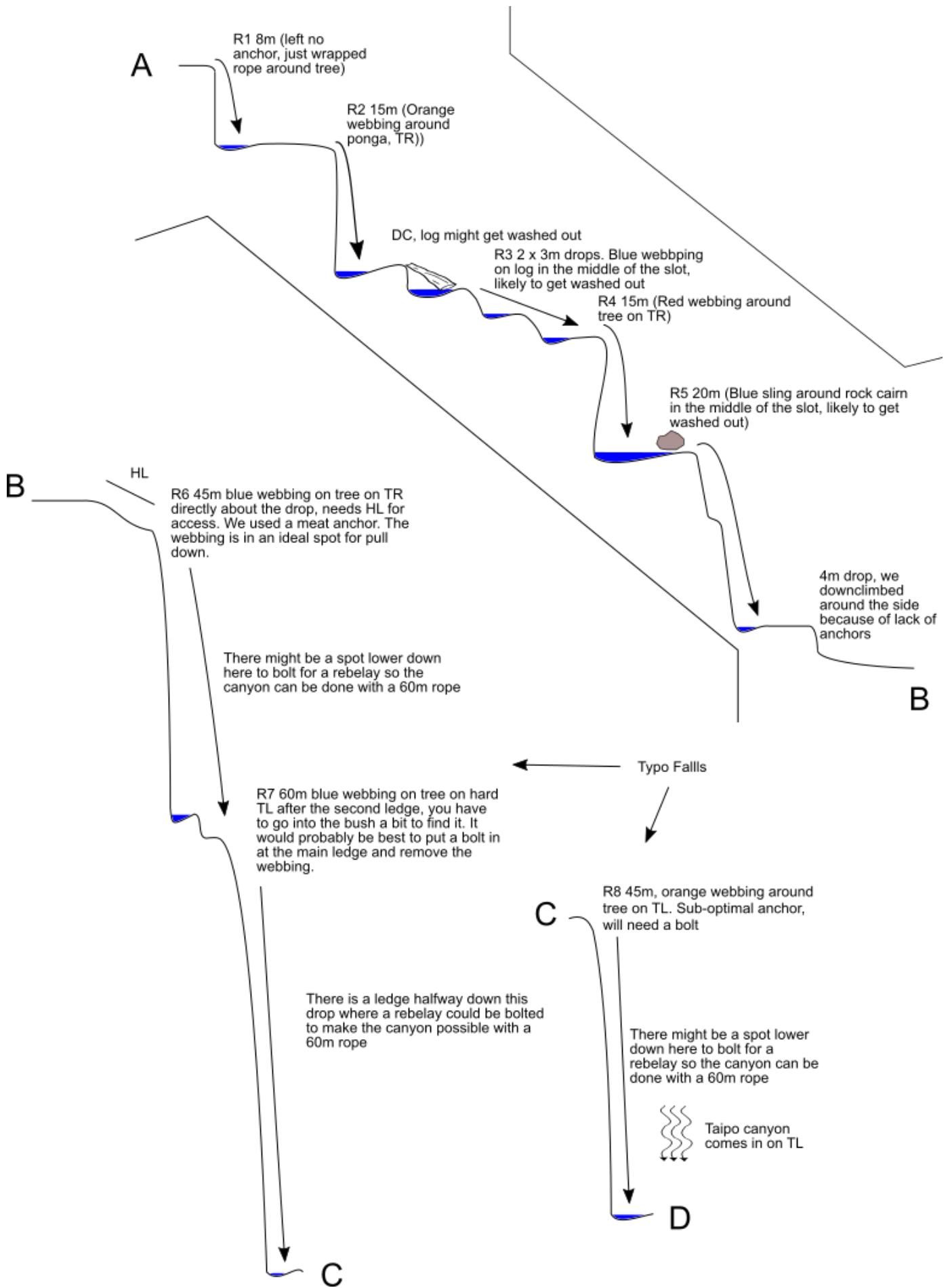
Possible log jams upstream could result in flash flood.

Escapes

Trying to bush bash up true right would be the best option, but it would be a very difficult canyon to escape.

Notes

First descent: Dannielle Cripps and James Judd 3 February 2021



GAMBLER'S CANYON

Canyon v4a1IV ★

Topo by James Judd and
Dannielle Cripps
www.kiwicanyons.org

Photo from beneath R2 with the log which has been used as a temporary anchor for R3:



Temporary rock anchor on R5:



GAMBLER'S CANYON

Canyon v4a1IV ★

*Topo by James Judd and
Dannielle Cripps*
www.kiwicanyons.org

Page 3

Climbing out to the anchor on R6:



Looking down from R6 with location of anchor for R7:



GAMBLER'S CANYON

Canyon v4a1IV ★

*Topo by James Judd and
Dannielle Cripps*

www.kiwicanyons.org

Page 4

Anchor for R7 is in the bush on TL:



R7:



GAMBLER'S CANYON

Canyon v4a1IV ★

*Topo by James Judd and
Dannielle Cripps*

www.kiwicanyons.org

Page 5

R8 with a view of R6 and R7:



GAMBLER'S CANYON

Canyon v4a1IV ★

*Topo by James Judd and
Dannielle Cripps*
www.kiwicanyons.org

Page 6