



# GAMBLER'S CANYON

*canyon v4a1IV* ★

## Location

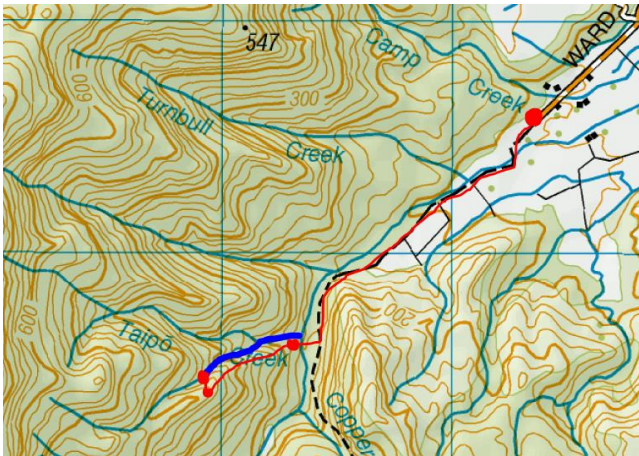
Takaka

## Character

A low water slot that turns into a steep drop, requiring a few re-belays. Whilst the water flow is low, the slot at the start and vertical aspect of the finish make the canyon exciting. The first descent was done without wetsuits in mid-summer on a hot day, just in thermals and raincoats. In winter this canyon is ideal because of the low flow not making things too cold!

## Map

BN24 Collingwood



Start of spur: -40.816083, 172.707567

Top of spur: -40.818129, 172.702804

Start of canyon: -40.817642, 172.702546

## Approach by Car

Drive to the Parapara Peak track carpark at the end of Ward-Holmes Rd, Takaka-Collingwood highway.

## Approach on Foot

Follow the Parapara peak track to the bottom of the Taipo stream. Right on the corner where the Taipo stream converges with the main river, bush bash up the ridge. There are lots of rabbit tracks that can be followed to the top. You will also need to learn to appreciate the importance of gorse for biodiversity and ecosystems so that you enjoy its presence along the ridge rather than losing your sanity.

## Rock

Limestone

## Water

Very low water – we did it without wetsuits in mid-summer. In mid-winter we used 4/3 mm wetsuits.

## Catchment

~0.25km<sup>2</sup>

## Anchors

Natural anchors, linked double bolts and unlinked double bolts. Make sure you are comfortable using unlinked double bolts.

Costs for the bolted anchors were supported by the NZCA Canyon Fund.

## Gear

2 x 50m ropes, but it's important to know how to extend a rope on a lowerable system in case someone gets stuck as R8 and R9 are 50m.

## Route Description

The river starts off as a small dribble and then you abseil into a slot. As the slot eventually opens, you come to a 150m vertical horizon line which is essentially one waterfall with a few ledges. The bottom of the 150m ends up joining the bottom of the 30m waterfall on the Taipo canyon. Follow the Taipo top from there (a couple of bolted 4m drops).

There is not much space at the belay station for R8. The first person to abseil R7 should take a rope to set up R8.

## Time

Vehicle park to start of canyon	1h30min
Canyon descent	1h30min
Return to vehicle	30min
<b>Total</b>	<b>3.5h</b>

## Flash Flood Danger

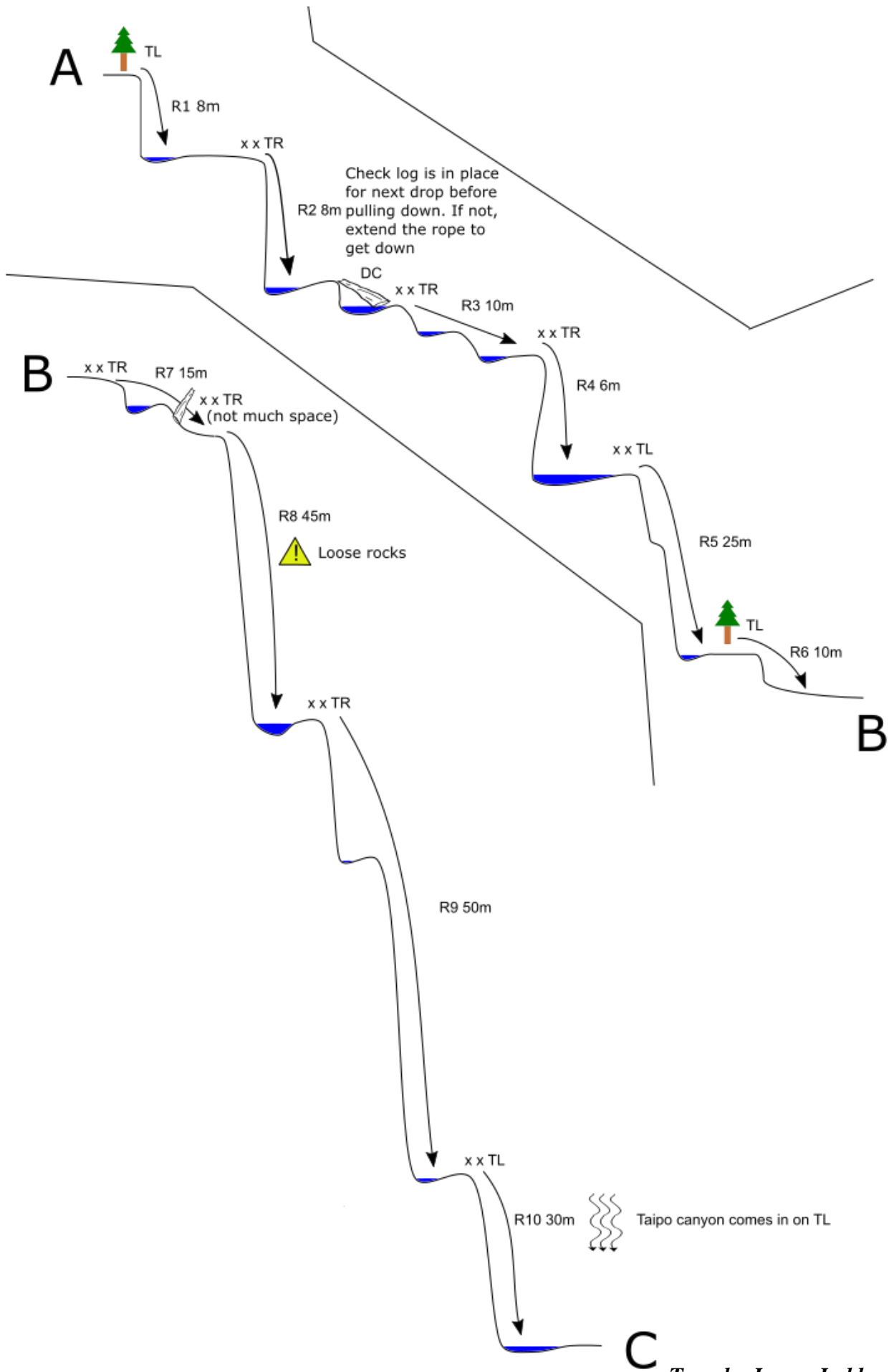
Possible log jams upstream could result in flash flood.

## Escapes

Trying to bush bash up true right would be the best option for the first part, but it would be a very difficult canyon to escape due to the slot. On the final drops, you could attempt to bush bash out true left, down to Taipo.

## Notes

First descent: Dannielle Cripps and James Judd 3 February 2021



# GAMBLER'S CANYON

Canyon v4a1IV ★

Topo by James Judd and  
Dannielle Cripps  
www.kiwicanyons.org



Left: R3, the slot at the start of this canyon is very uncharacteristic of the area

Below: R5, coming out of the slot



## **GAMBLER'S CANYON**

*Canyon v4a1IV* ★

*Topo by James Judd and  
Dannielle Cripps*  
[www.kiwicanyons.org](http://www.kiwicanyons.org)

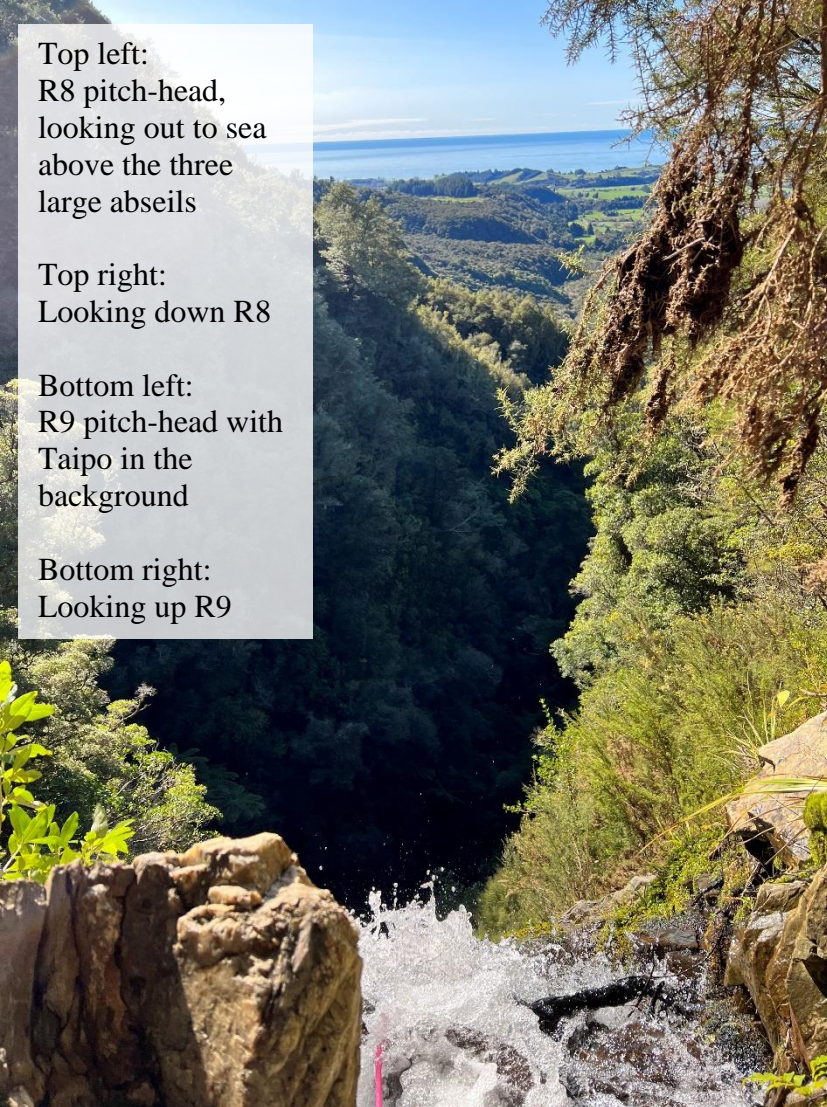
Page 3

Top left:  
R8 pitch-head,  
looking out to sea  
above the three  
large abseils

Top right:  
Looking down R8

Bottom left:  
R9 pitch-head with  
Taipo in the  
background

Bottom right:  
Looking up R9



# GAMBLER'S CANYON

Canyon v4a1IV ★

Topo by James Judd and  
Dannielle Cripps  
[www.kiwicanyons.org](http://www.kiwicanyons.org)