



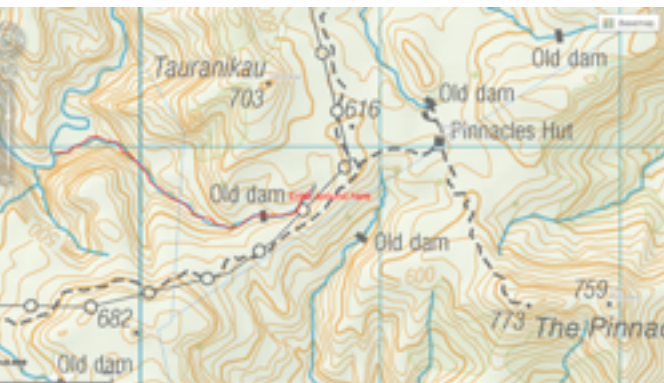
Tauranikau Canyon

v3a1III(grade)

Location

Coromandel.Thames. Kauaeranga valley .

Map



Character

An easy non technical canyon with a 2 hour walk up to the Pinnacles with only 5 abseils and a great dam that is almost intact. The dam is a danger but stable at present, or so it appears. It shows of the massive effort that was once put in around the area in logging the prized Kauri.

Approach by Car

Heading north into Thames on the main road (SH25) cross the Kauaeranga River, then turn right at obvious signs for Kauaeranga Valley. Follow the sealed, then gravel road for 22km to a car park at the road end.

Approach on Foot

Park at the road end of the valley and take the Pinnacles track heading up the steps and the well marked track for around 2 hours. Just before you reach the last turn towards the Pinnacles hut take a turn into the bush and follow this down through thick undergrowth to the the dam. (Refer to map)

Rock

Solid Rhyolite.

Water

Generally very low flow in Tauranikau canyon. This drops into the Kauaeranga valley that has a very large catchment. Beware in heavy rain as this river becomes very large.

Catchment

A few square km in Tauranikau canyon
Leading to - Kauaeranga gorge canyon 9+ square km (See topo for Kauaeranga gorge)

Anchors

There are a couple of 10mm SS bolts in place with hangers and maillons on. Other than that trees are used to descend this canyon. Use these with care not to strip the bark, Some are quite small.

Gear

Rope length needed 1 x 40m minimal
We recommend a back up for that stuck rope!
Take spare maillons and usual karabiners etc

Route Description

A good 2hr walk up to nearly the Pinnacles hut then a 20- 30 min bush bash and you will be at the dam

Flash Flood Danger

Limited flood danger in Tauranikau canyon but the Kauaeranga gorge does flood during heavy rain.

Time Total

Vehicle park to start of canyon	2.3hrs
Canyon descent	3 hrs
Return to Vehicle	2 hrs
Total	7.5h

Escapes

Once committed there are few escapes from this canyon. Escape is easy in the upper canyon but not so on the lower part.

Notes

First descent: 28/2/15
Dennis Vshivkov
Peter harrison
Pete Smith
Shanan Fraser

Topo by Pete Smith / Shanan Fraser

www.KiwiCanyons.org