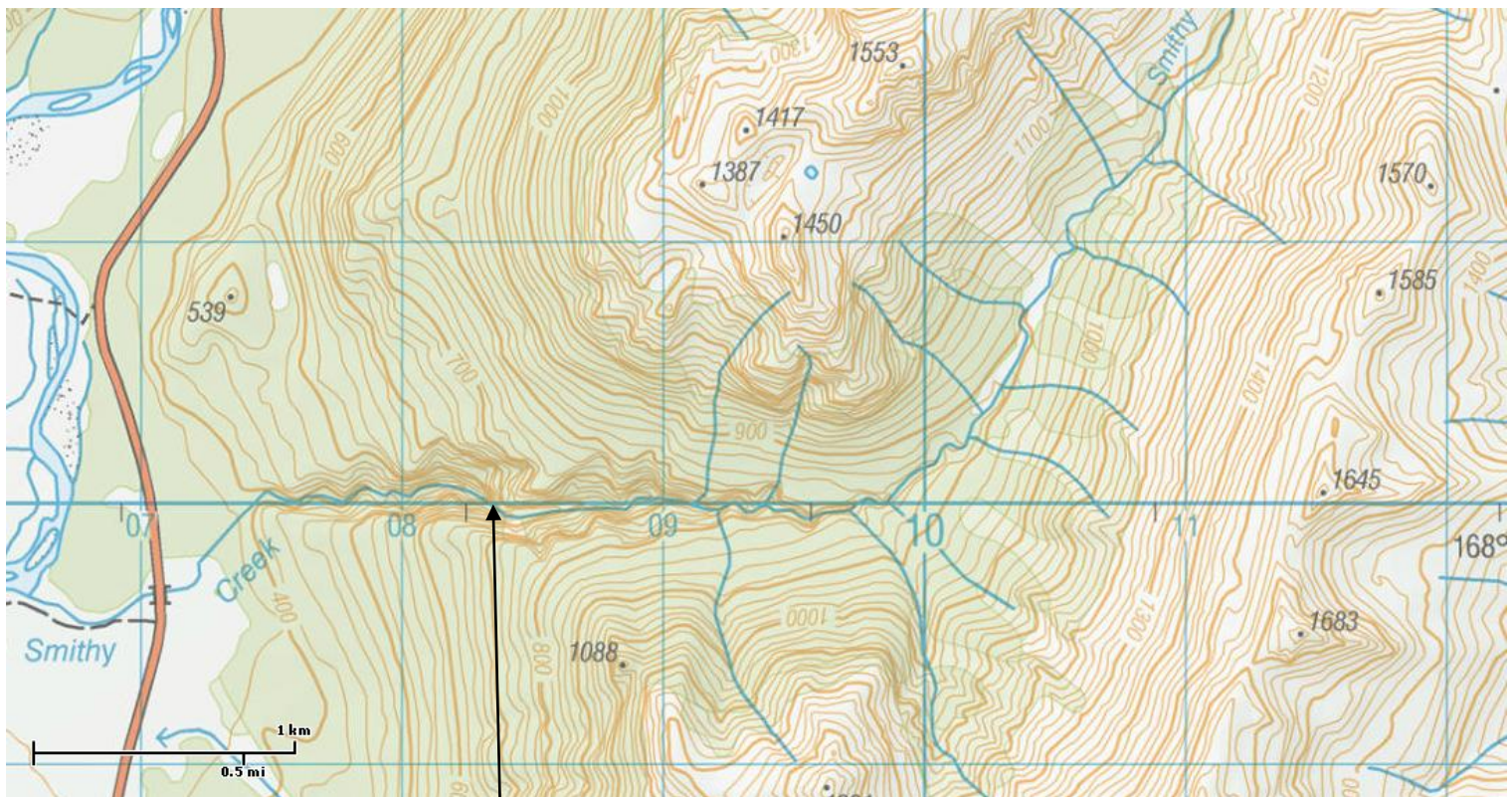


## Smithy Creek

Eglinton Valley, Te Anau-Milford Rd

Just from the look on the Topomap. One very large waterfall seen in Google Earth, location correlates to a very steep section seen on topomap. Looks open, bouldery below the major drop, can't see in above it. Very large catchment. Probably very committing.

Public Access from highway



Major Waterfall (60-100+)  
seen on Google Earth