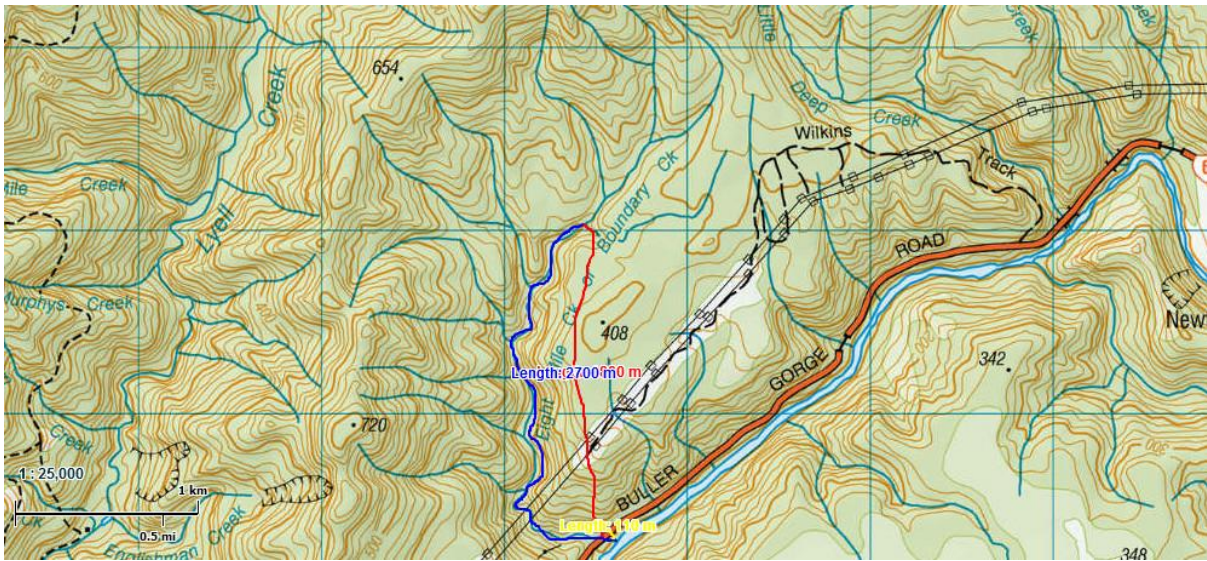


8 Mile Creek / Boundary Creek – Buller Gorge

Looks deep from the road. Looks ok on topo map. Probably Granite rock.



Toine Houtenbos

Alternative access could be via the Wilkins Track, used to descend Little Deep Creek (which is perhaps worth doing once, but just not quite enough water to make consistent canyon features. Lots of boulder hopping)

Chucky