

21 March 2017
Upper Robinson Creek V3A2IV*
completed by Alain Rohr and Annette Phillips

Access 3-4 hours
Descent 4 hours to start of the classic lower section
Canyon distance 1.5km

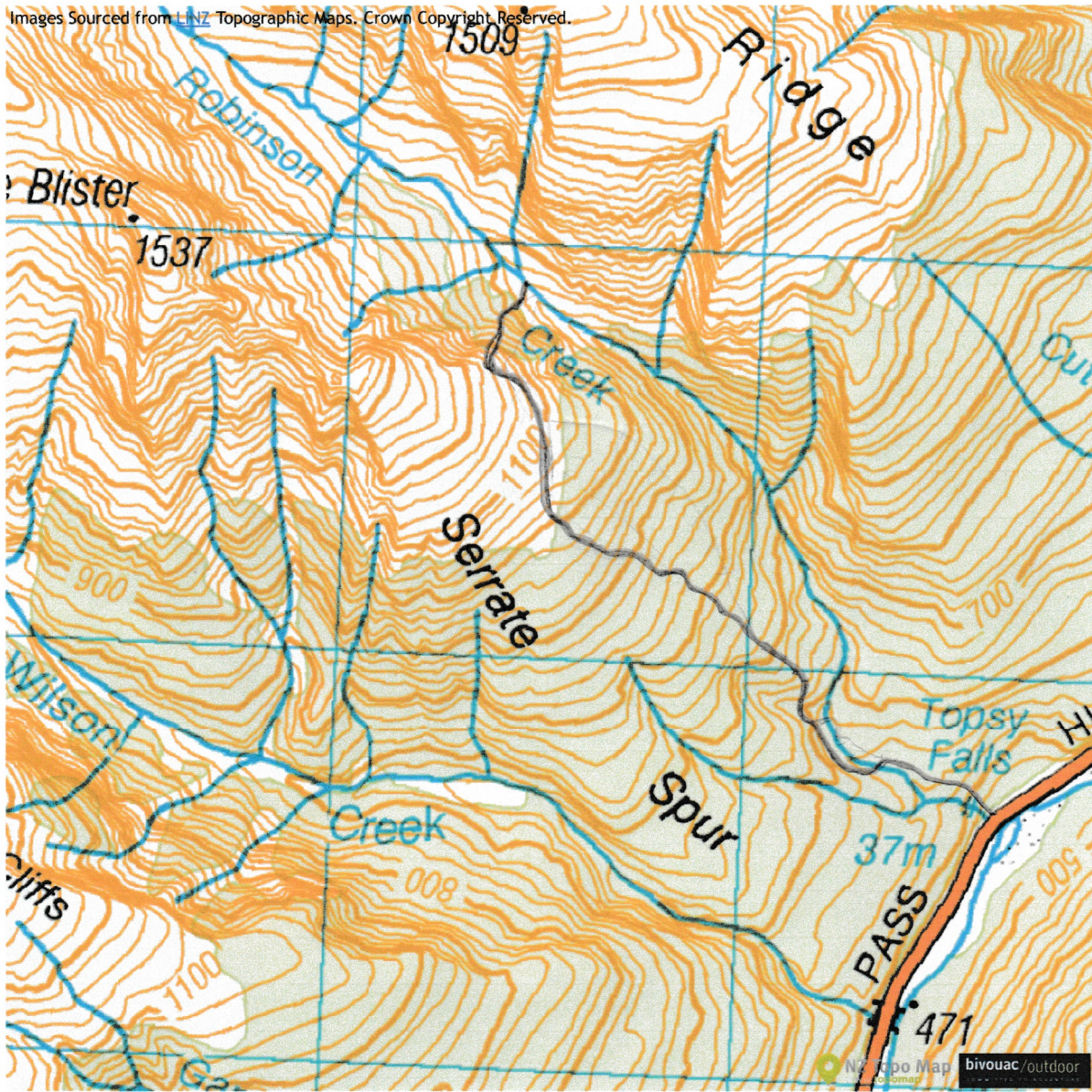
Access - Good travel through mostly open beach forest and following deer trails much of the time. Wonderful views from the forest line looking across Haast Valley from Pyke Creek to out to Makarora Valley and over the ridge to Wilson Creek.

Access from high point into the canyon is a little tricky. Steep down climbing through tussocks and subalpine scrub and then thick vertical forest, watch out for cliff drop offs - trend slightly to the left (up valley). We took 3 abseils ((15, 20, 25m) through the forest to arrive at a dry rocky gully that we could carefully down climb to the canyon.

The upper canyon involves large sections of down climbing first on large boulders then quality bedrock. A little slippery which slows travel and care is required. 6 abseils in total ranging in length from 6 - 25m. 5 of them on single bolts and the last one from a tree. Good rock for bolting on the canyon walls.

Beautiful terrain and a great adventure type day trip for those interested in the upper valley section above this classic canyon.

Images Sourced from LINZ Topographic Maps. Crown Copyright Reserved.



V3A21N Robinson Upper Section 21/3/17

