

## Armstrong Canyon

Ruahine Forest Park

### Access 2.5-3h

From Sunrise Hut Carpark, (North Block Rd, -39.79737 S, -39.79737 E) take the main track for 2.5-3hrs to Armstrong Saddle.

Start easily, through tussock. There appears to be a thin band of leather wood, so some scrub bashing may be necessary.

### Canyon ?

5x Waterfalls observed from the 'return' route whilst on a tramping trip. Low Volume waterfall tramping probably.

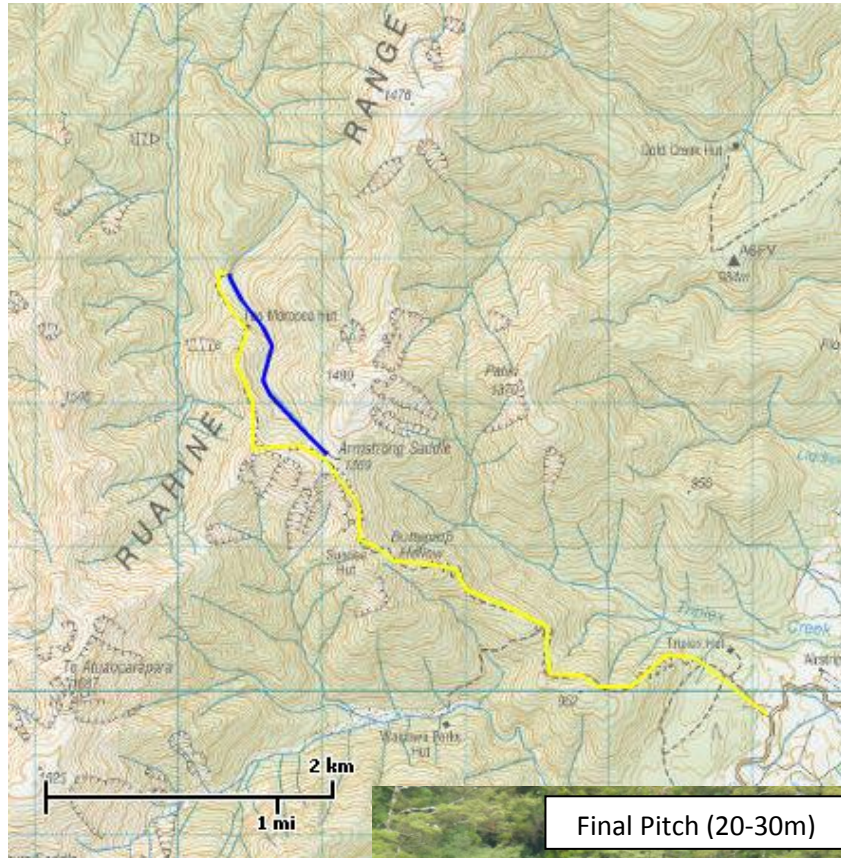
There are 2x approx 20-30m falls about 100m above where the Top Maropea track meets the Maropea river tributary. From the track below the Top Maropea Hut, you can look into the stream, which is flat and open, though the valley sides are quite steep. The 3 other falls looked about 10-20m and were equally spread from the bushline down to the first 'zig' in the stream.

(Below the track turnoff, the Maropea river is just open tramping country)

### Return 2-3h

About 100m below the final pitch, a DOC sign (green/yellow) high on the TL marks the start of the track to Top Maropea Hut

- ~30mins to Top Maropea (4 bunks, water tank and a great view)
- ~1hr further to Sunrise Hut (which has great views, but is very exposed to the weather, take Alpine Tramping clothes!)
- ~ 1h30 Sunrise Hut to the Car.



Final Pitch (20-30m)



Top Maropea Hut track start



Armstrong Saddle

